

NPN

New Product News



MAXISFEED

Quick Head Changeable Modular Milling Line Expanded



KEY POINT

TaeguTec's head changeable MAXI-SFEED line introduces the ER Collet adaptor.

The slotting, facing, and threading MAXI-SFEED line's easy head change system enhances production thanks to a one screw mounting that reduces set-up time. TaeguTec has now released an extra ER collet adaptor that is compatible with a wide range of collet chucks.

Further changes to the line include updating the TR17 shank's screw and wrench to improve efficiencies in stock delivery. The updated screw and wrench will be available after the current inventory runs out.







For detailed information about the MAXI-SFEED line, refer to our previous NPN.



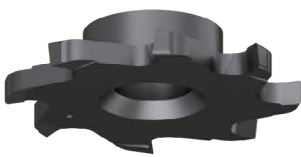
MAXI-SFEED



MAXI-SFEED product line

Carbide head	 TR-S For slotting	 TR-F For facing	 TR-T For threading
Holder	 TR-S For slotting and threading	 TR-F-C For facing	 TR-ER-C For ER collet

Compatible with various head types



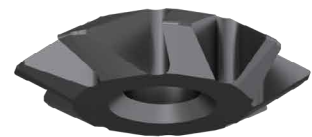
MAXISPEED

TR-S
For slotting



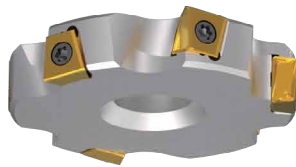
MAXISPEED

TR-F
For facing



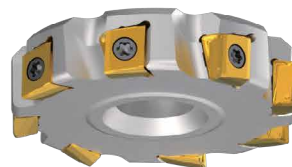
MAXISPEED

TR-T
For threading



MAXITANG

4T-TSM-TR
For slotting



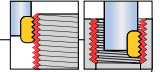
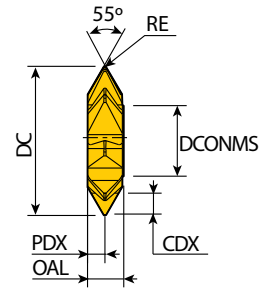
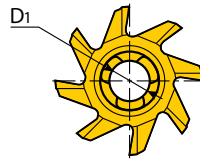
MAXITANG

4T-TE90-TR
For facing

TR-T-W55



Interchangeable solid carbide threading heads - 55° partial profile



Designation	TPI	Dimension (mm)										Grade
		DC	DMIN	NOF	PDX	RE	D1	CDX	OAL	DCONMS	TT5525	
TR 13-T-24.7-W55-3T	5-3	24.7	36	6	2.2	0.5	7.5	3.5	7.7	13	●	
15-T-31.7-W55-4T	6-4	31.7	46	8	3.7	0.5	8.4	4.7	7.7	15	●	
17-T-39.7-W55-3T	4-3	39.7	57	10	4.5	0.8	9.8	6.2	9.5	17	●	

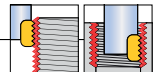
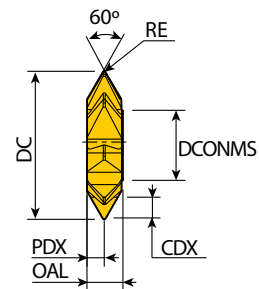
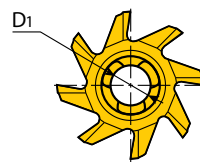
- TPI: Threads per inch
- NOF: Number of flutes

●: Standard items

TR-T-M60



Interchangeable solid carbide threading heads - 60° partial profile



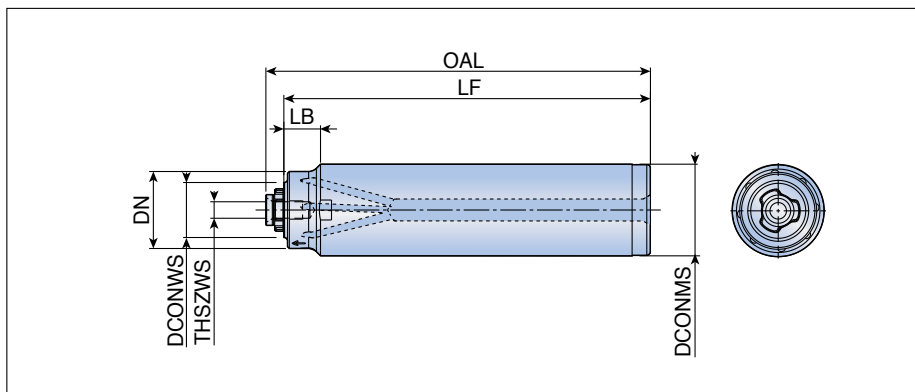
Designation	TP	TPI	Dimension (mm)										Grade
			DC	DMIN	NOF	PDX	RE	D1	CDX	OAL	DCONMS	TT5525	
TR 13-T-24.7-M60-5P	3-5	5-3	24.7	36	6	2.2	0.2	7.5	3.5	7.7	13	●	
15-T-31.7-M60-6P	4-6	6-4	31.7	46	8	3.7	0.3	8.4	4.7	7.7	15	●	
17-T-39.7-M60-8P	6-8	4-3	39.7	57	10	4.5	0.4	9.8	6.2	9.5	17	●	

- TP: Threads pitch, TPI: Threads per inch
- NOF: Number of flutes

●: Standard items




TR-F-C

Facing holders



Designation	Dimension (mm)							Coolant	Head
	DCONMS	DCONWS	LB	LF	OAL	THSZWS	DN		
TR13-20-L100-F-C	20	13	10.0	100	104.35	M4x0.5	16	●	TR-F.... 4T-TE90-TR...
13-25-L100-F-C	25	13	12.5	100	104.35	M4x0.5	16	●	
15-25-L100-F-C	25	15	10.0	100	104.90	M5x0.5	21	●	
15-32-L110-F-C	32	15	13.5	110	114.90	M5x0.5	21	●	
17-32-L140-F-C	32	17	10.0	140	146.00	M6x0.5	28	●	
17-42-L140-F-C	42	17	15.0	140	146.00	M6x0.5	28	●	

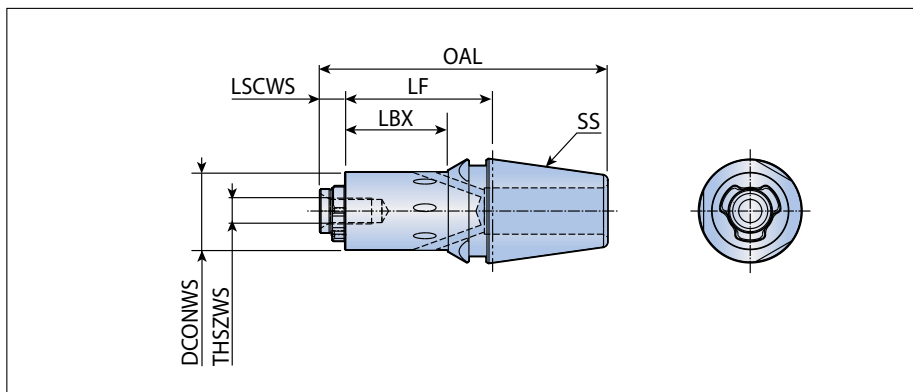
Spare parts

Designation	Screw	Wrench	Wrench handle		
					
TR13	TS 40T098/HG-P	BLD IP15/S7	SW6-T		
TR15	TS 50T110/HG-P	BLD IP20/S7	SW6-T		
TR17	SR M6X0.5- SP1719-IP25-H	BLD IP25/S7	SW6-T		

TR-ER-C new



ER collet chuck adaptors



Designation	Dimension (mm)							Coolant	Head
	SS	DCONWS	LBX	LF	OAL	THSZWS	LSCWS		
TR 13 ER20-H20-C	ER20	13	20	28.6	55.4	M4x0.5	4.4	●	TR-S/F/T...
15 ER20-H20-C	ER20	15	20	28.6	55.9	M5x0.5	4.9	●	4T-TSM/TE90-TR...
13 ER25-H20-C	ER25	13	20	29.1	58.4	M4x0.5	4.4	●	
15 ER25-H20-C	ER25	15	20	29.1	58.9	M5x0.5	4.9	●	
17 ER25-H20-C	ER25	17	20	29.1	60.0	M6x0.5	6.0	●	
13 ER32-H20-C	ER32	13	20	30.1	64.4	M4x0.5	4.4	●	
15 ER32-H20-C	ER32	15	20	30.1	64.9	M5x0.5	4.9	●	
17 ER32-H20-C	ER32	17	20	30.1	66.0	M6x0.5	6.0	●	
17 ER40-H20-C	ER40	17	20	32.2	72.0	M6x0.5	6.0	●	

Spare parts

Designation	Screw	Wrench	Wrench handle		
TR13	TS 40T098/HG-P	BLD IP15/S7	SW6-T		
TR15	TS 50T110/HG-P	BLD IP20/S7	SW6-T		
TR17	SR M6X0.5-SP1719-IP25-H	BLD IP25/S7	SW6-T		

Recommended Cutting Conditions

ISO	Material			Vc(m/min)	f (mm/tooth)		
	Material	AISI/SAE/ASTM	HB		TR13	TR15	TR17
P	Non-alloy steel	1020	130-180	120-200	0.04-0.12	0.05-0.15	0.06-0.15
	Low alloy steel	4030	260-300	200-300	0.04-0.12	0.05-0.15	0.06-0.15
	Low alloy steel	3135	HRC 35-40	80-120	0.02-0.06	0.03-0.12	0.04-0.12
	High alloy steel	H13	200-220	100-150	0.03-0.07	0.04-0.12	0.04-0.12
M	Martensitic stainless steel	420	200	100-150	0.02-0.06	0.04-0.12	0.04-0.12
	Austenitic stainless steel	304L	200	80-120	0.02-0.06	0.03-0.10	0.03-0.12
K	Gray cast iron	Class 40	250	150-200	0.04-0.12	0.05-0.20	0.05-0.20
	Malleable cast iron	Class 65 45 12	200	130-180	0.04-0.10	0.05-0.18	0.05-0.18
S	High temp. alloys	Inconel 718	HRC 36-40	20-30	0.015-0.10	0.02-0.12	0.02-0.12
		AMS R56400	HRC40-45	30-40	0.015-0.06	0.02-0.12	0.02-0.12

■ Steel
 ■ Stainless steel
 ■ Cast iron
 ■ High temp. alloys